

SET UP ASC2S LOCAL DETECTORS AS SYSTEM DETECTORS

System Detector Local Assignments

- F1 6,3
- Set Up Detector Log Interval (0,5,15,30,60)
- Assign Local Detector Number (1-64) to System DET (1-16)
 - You can setup 16 System Detectors per local to collect data and store in the controller buffers.
 - You are limited to 8 System Detectors per local that send System Detector information back to the ASC/2M master on A1,A2,B1,B2,C1,C2,D1,D2

NOTE: If these System Detectors [A1 ... D2] are used in the master you can use either 1 or 9 but not both. 1 & 9 both send information back to the master as A1. The same is true for SYS DET B1,B2,C1,C2,D1,D2.

Local System Detector

Enter the detector number 1-64 corresponding to local system detectors 1-16.

This assignment allows local detectors to be used as system detectors for reporting to a zone master.

System master designations cross referenced to local system detector numbers are:

SDA1 = 1 - 9 SDC1 = 5 - 13
SDA2 = 2 - 10 SDC2 = 6 - 14
SDB1 = 3 - 11 SDD1 = 7 - 15
SDB2 = 4 - 12 SDD2 = 8 - 16

Detector Types/Timers

- F1 6,1
- Enable Local Detector Number to LOG with "X"

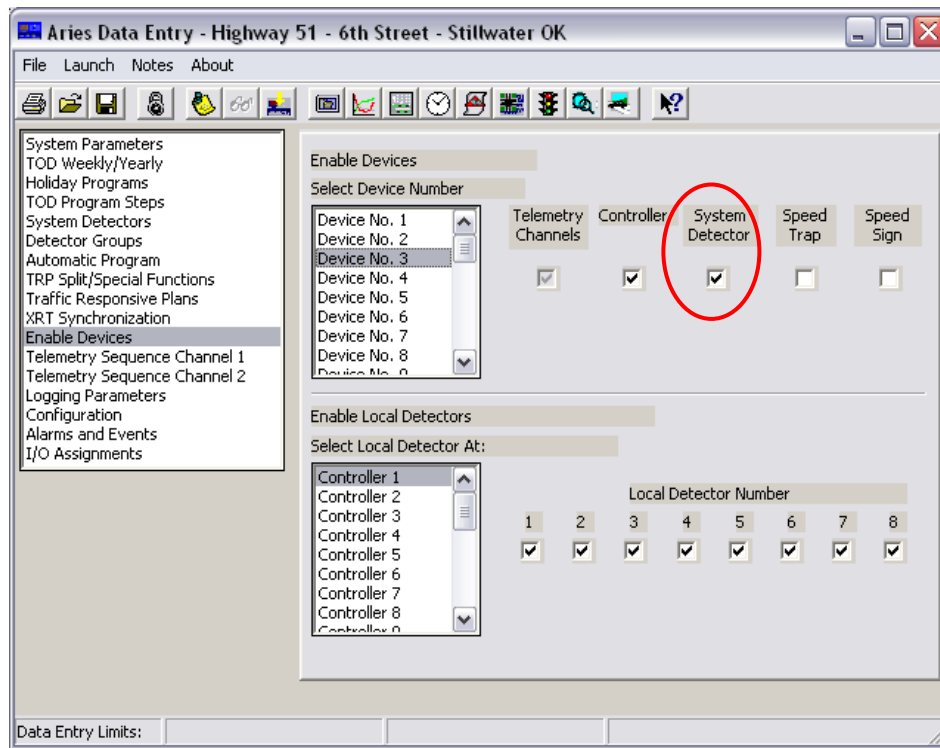
TOD Program Steps

- F1 5,6
- Day Program Number (1,2,3,4...)
- Step Begins (0:00)
- Step Ends (0:00)
- DET LOG ENABLE.. "X"

SET UP ASC2M MASTER CONTROLLER SYSTEM DETECTORS

Enable Device

- F1 1,0,2
- Enable System Detectors @ Int. (1,2,3,4...)



- Assign System Detector Number to (A1,A2,B1,B2,C1,C2,D1,D2)
- Example A1=15 A2=16
- The System Detector Numbers are user definable 1 ... 32 (Fig. 1)

Figure 1

Intersection #	A1	A2	B1	B2	C1	C2	D1	D2
1	1	2	3	4	5	6	7	8
2	9	10	11	12	13	14		
3	15	16						
4								
5								
6								
7								
8								
9								
10								
11								
12								

- The ASC/2M master can communicate with up to 32 System Detectors
- You can assign up to 8 system Detectors per intersection

Aries Data Entry - Highway 51 - 6th Street - Stillwater OK

File Launch Notes About

System Parameters
TOD Weekly/Yearly
Holiday Programs
TOD Program Steps
System Detectors
Detector Groups
Automatic Program
TRP Split/Special Functions
Traffic Responsive Plans
XRT Synchronization
Enable Devices
Telemetry Sequence Channel 1
Telemetry Sequence Channel 2
Logging Parameters
Configuration
Alarms and Events
I/O Assignments

Telemetry Channel 2

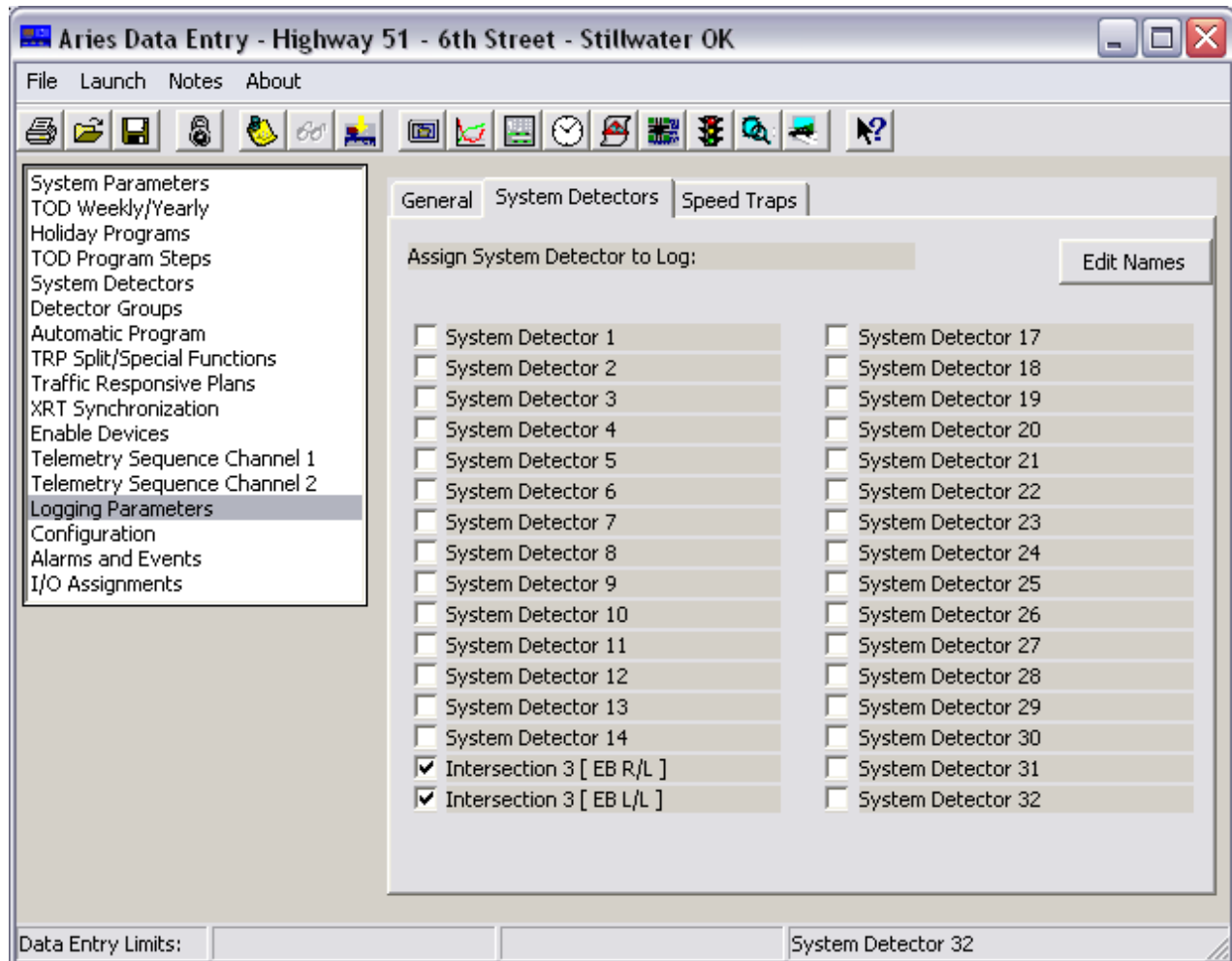
Select Local Telemetry Address

Address 1	CTR	AUX	SDA1	SDA2
Address 2	3	3	15	16
Address 3	SDB1	SDB2	SDC1	SDC2
Address 4	0	0	0	0
Address 5	SDD1	SDD2	STA	STB
Address 6	0	0	0	0
Address 7	AUX2			
Address 8	0			
Address 9				
Address 10				
Address 11				
Address 12				
Address 13				
Address 14				
Address 15				
Address 16				

Data Entry Limits:

Logging Parameters

- F1 1,0,5
- Assign System Detector to Log "YES"
- Log Period (0,15,30,60)
- Assign System Detector to Log with "X"



NOTE

The log buffer starts on the hour, so if you want immediate data, change the time on the controller to 5 seconds before the hour; and then when the controller changes to the top of the hour reset the time.

Also note that the NEMA ASC/2 and ASC/2070 store the logs internally, but no Activity logs can be displayed on the controller screen, except event logs [Event logs, detector event logs and MMU event logs]. The logs can only be viewed by uploading them to Central software, Aries or some other communication package. The ASC/3 controller will display Events and Activity logs on the controller screen.